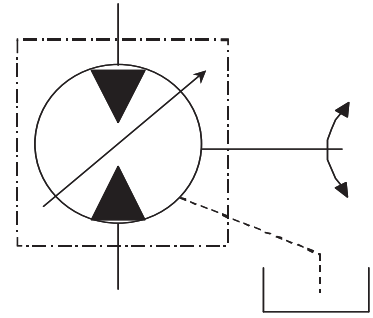


# Variable Displacement Motor 71392 Models

40,6 to 21,0 cm<sup>3</sup>/r [2.48 to 1.28  
in<sup>3</sup>/r] Displacement



TYPICAL PRODUCT NUMBER	MODEL CODE
71392-DAE	AAMGA110M000A0C
71392-DAE	AAMGA110M000A0C
71392-DAC	AAMGA210D000A0C
71392-DAJ	AAMGA210H000A0C
71392-DAB	AAMGA260H000A0C

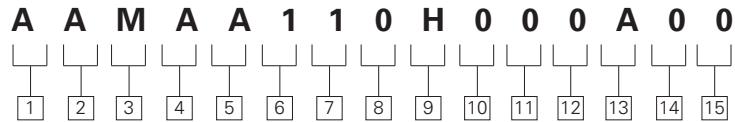


SPECIFICATIONS	MODEL 71302/71392
Maximum Displacement	40,6 to 21,0 cm <sup>3</sup> /r [2.48 to 1.28 in <sup>3</sup> /r]
Maximum Rated Speed	3600 RPM at 17° Control Angle 4500 RPM at 9° Control Angle
Continuous Rated Pressure †	210 bar [3000 lbf/in <sup>2</sup> ]
Maximum Rated Pressure ††	345 bar [5000 lbf/in <sup>2</sup> ]
Maximum Intermittent Pressure †††	370 bar [5400 lbf/in <sup>2</sup> ]
Input Flow at Rated Speed and Pressure	126,4 l/min [34 GPM] at 17° Control Angle
Output Power at Rated Speed and Pressure	38,8 kW [52.0 hp] at 17° Control Angle
Output Torque at Rated Speed and Pressure	127 N•m [1125 lbf•in] at 17° Control Angle
Continuous Allowable Case Pressure	1,7 bar [25 lbf/in <sup>2</sup> ]
Continuous Inlet Temperature	107°C [225°F]
Weight/Single Motor (approximate)	9,5 kg [21 lbs]

† Continuous Rated Pressure - Motor may run uninterrupted at this pressure.  
 †† Maximum Rated Pressure - Highest allowable system pressure. (High pressure relief valve setting)  
 ††† Maximum Intermittent Pressure - A pressure spike only for a short period of time, not continuous.

# Fixed Displacement Motor 71392 Models

40,6 cm<sup>3</sup>/r [2.48 in<sup>3</sup>/r]  
Displacement



<p><b>1 2 3 Code Title</b> <b>AAM-</b> 40, 6 cm<sup>3</sup>/r [2.48 in<sup>3</sup>/r] Variable displacement piston motor frame size</p> <hr/> <p><b>4 Control Options</b> <b>F</b> - Hydraulic De-stroke Control, Remote Port Down - Model 71392, (opt.) <b>G</b> - Hydraulic De-stroke Control, Remote Port Up - Model 71392, (opt)</p> <hr/> <p><b>5 Output Shaft</b> <b>A</b> - 13 Tooth 16/32 spline, shaft extension 41,1 [1.62], (std.) <b>B</b> - 13 Tooth 16/32 spline, with snap ring groove, shaft extension 41,1 [1.62], (opt.)</p> <hr/> <p><b>6 Main Port, Size, &amp; Location</b> <b>1</b> - 1 1/16-12 UN-2B straight thread o-ring ports - Rear, (std.) <b>2</b> - 1 1/16-12 UN-2B straight thread o-ring ports - Opposite Sides, (std.)</p>	<p><b>7 Drain Port, Size, &amp; Location</b> <b>1</b> - 9/16-18 UNF-2B straight thread o-ring port - Right Side, (std.) <b>3</b> - 9/16-18 UNF-2B straight thread o-ring port - Rear of Backplate, (opt.) <b>4</b> - 9/16-18 UNF-2B straight thread o-ring port - Right Side and Left Side, (opt.) <b>6</b> - 9/16-18 UNF-2B straight thread o-ring port - Top, (opt.)</p> <hr/> <p><b>8 Auxiliary Mounting Features (rear)</b> <b>0</b> - No Auxiliary Mounting Feature, (std.) <b>1*</b> - 13 Tooth 16/32 Ext. Tapered spline with tapped hole, bottom pad with 5/16-18 UNC- 2B mousing holes, (opt.)</p>	<p><b>9 Min-Max Displacements &amp; Control Angles</b> <b>C</b> - 12,3 to 40,6 cm<sup>3</sup>/r [1.70 to 2.48 in<sup>3</sup>/r], 5o 17' maximum - 9o 0' mini- mum control angle, (std.) <b>D</b> - 17,9 to 40,6 cm<sup>3</sup>/r [1.09 to 2.78 in<sup>3</sup>/r], 7o 40' maximum - 9o 0' mini- mum control angle, (std.) <b>H</b> - 21,0 to 40,6 cm<sup>3</sup>/r [1.28 to 2.48 in<sup>3</sup>/r], 17o 0' maximum - 9o 0' mini- mum control angle, (std.) <b>M</b> - 27,9 to 40,6 cm<sup>3</sup>/r [1.7 to 2.48 in<sup>3</sup>/r], 11o 50' maximum - 9o 0' mini- mum control angle, (std.)</p>	<p><b>10 11 Special Features</b> <b>00</b> - No special feature, (std.)</p> <hr/> <p><b>12 13 Paint</b> <b>0A</b> - Primer, (std.) <b>0B</b> - Black Paint, (std.)</p> <hr/> <p><b>14 Identification</b> <b>0</b> - Standard, (std.)</p> <hr/> <p><b>15 Design Code</b> <b>0</b> - Eaton assigns current design code, (std.)</p>
--	---	--	--

*\* Requires the selection of opposite side porting only.*

*Note: All ports are SAE (J1926) o-ring ports.*

**Variable displacement piston motors are specified by the following model code. Once a motor is built from the model code, a product number will be assigned to that configuration. Make sure all positions are selected within the 15 digit code for each motor.**

# Model 71392

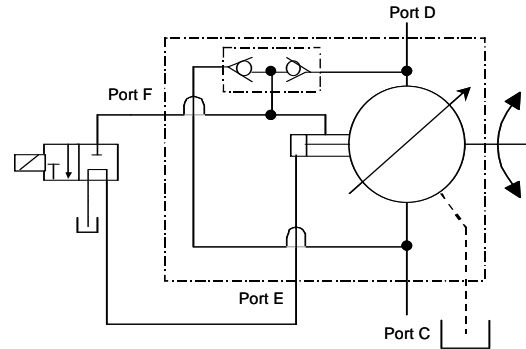
## Installation Drawings

### Hydraulic De-stroke Control

(Code position 4, selection F or G)

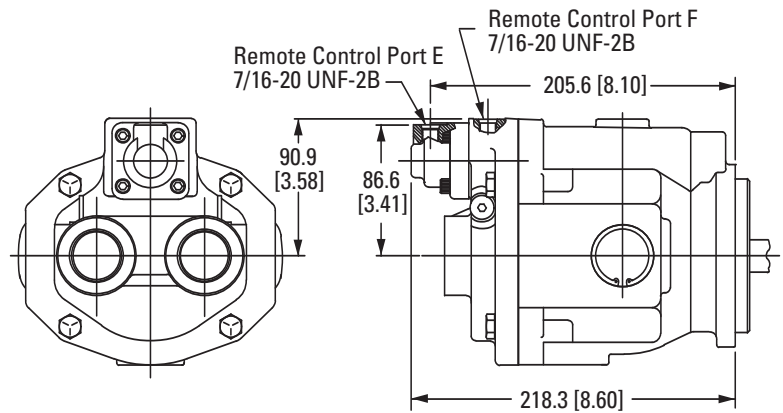
The Hydraulic De-stroke Control feature allows the operator to control the motor without any mechanical linkage to the motor.

A normally closed valve is required to provide maximum displacement to the motor. The valves must be rated for maximum system pressure.



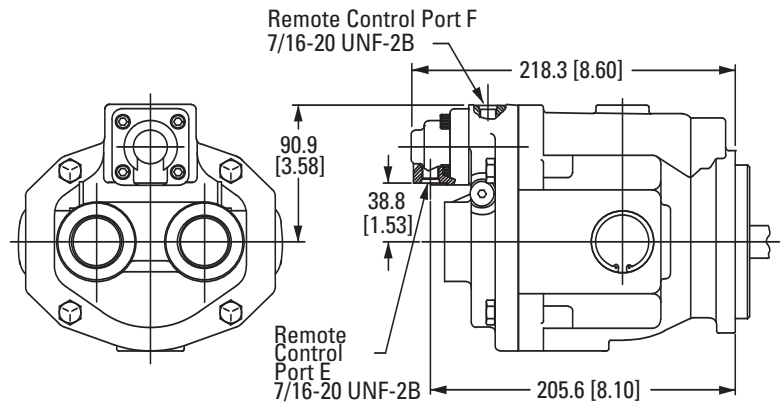
### Control Port up

(Code position 4, Selection G)



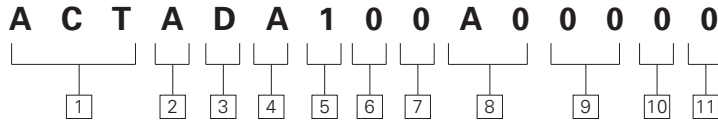
### Control Port Down

(Code position 4, Selection F)



**Note: All ports are SAE (J1926) o-ring ports. Dimensions are in millimeters [inches], unless otherwise specified.**

# 72450 Series Servo Motor



**1 Code Title**

- AAZ** - 40, 6 cm<sup>3</sup>/r [2.48 in<sup>3</sup>/r]  
Servo Controlled  
Variable Displacement  
piston motor
- \*\*\*** - 49,2 cm<sup>3</sup>/r (3.00 in<sup>3</sup>/r)  
Servo Controlled  
Variable Displacement  
motor

**2 Output Shaft**

- A** - 13 Tooth 1/32 spline,  
Shaft extension  
41,4mm (1.62 in)

**3 Auxiliary Mounting Features (rear)**

- 0** - No Auxiliary Mounting  
Features
- A** - Diameter 22.22 mm  
(.875 in) taper shaft

**4 Drain Port, Size, & Location**

- A** - 1-1/16-12 UN-2B SAE o-  
ring, left and right side
- B** - 1-1/16-12 UN-2B SAE o-  
ring, left and right side.  
Right side plugged.
- C** - 1-1/16-12 UN-2B SAE o-  
ring, left and right side.  
Left side plugged.

**5 Main Port, Size, & Location**

- 1** - 1-5/16-12 UN-2B SAE o-  
ring (A&B) same side  
(right side)
- 2** - 1-5/16-12 UN-2B SAE o-  
ring (A&B) same side  
(left side)

**6 Control Assembly**

- 00** - No control assembly  
Port plate control

**7 Min-Max Displacements**

- A** - 20.5-40.6 cm<sup>3</sup>/r (1.25-  
2.48 in<sup>3</sup>/r) 8o 45 min-  
utes min. - 17o 0  
minutes max.
- B** - 22.5-40.6 cm<sup>3</sup>/r (1.37-  
2.48 in<sup>3</sup>/r) 9o 34 min-  
utes min. - 17o 0  
minutes max.
- F** - 24.5-49.2 cm<sup>3</sup>/r [1.49-  
3.00 in<sup>3</sup>/r] 8o 34 min-  
utes min. - 17o 0  
minutes max.
- G** - 29.5-49.2 cm<sup>3</sup>/r [1.80-  
3.00 in<sup>3</sup>/r] 10o 28 min-  
utes min. - 17o 0  
minutes max.

**8 Paint**

- 0A** - Primer, (std.)
- 0B** - Black Paint, (std.)

**9 Special Features**

- 00** - None
- 03** - Shuttle valve and back-  
pressure valve set 15.2-  
17.2 Bar (220-250 PSI)  
rear facing - S1, S2  
servo control ports
- \*\*\*04**- Ref. code title
- 07** - Spring biased to max.  
displacement

**10 Customer Identification**

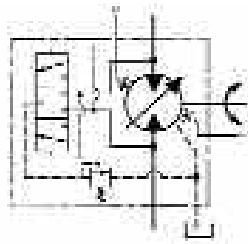
- 0** - Standard, (std.)

**11 Design Code**

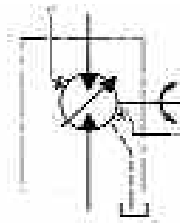
- 0** - Eaton assigns current  
design code, (std.)

# 72450 Series Servo

## Installation Drawings



Servo Motor with Shuttle

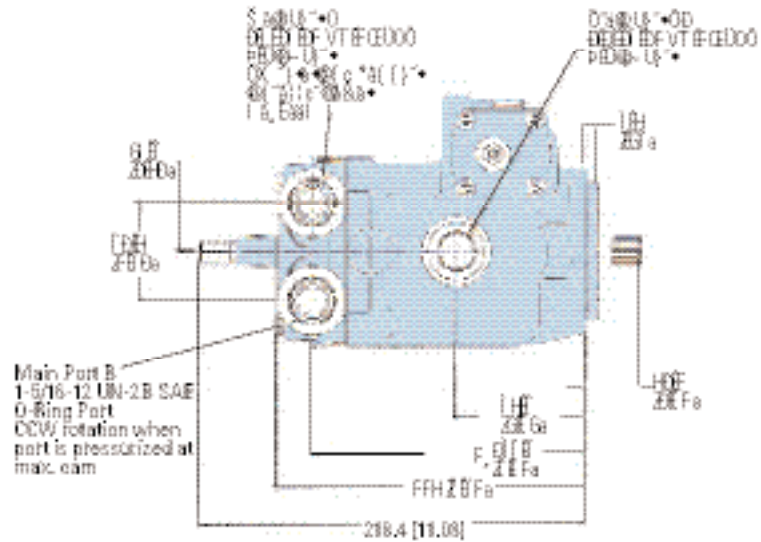
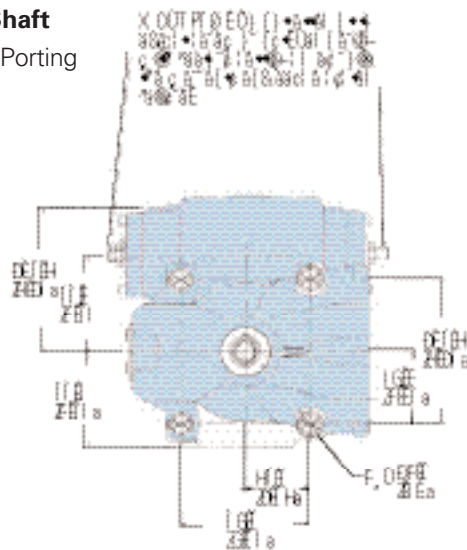


Standard Servo Motor

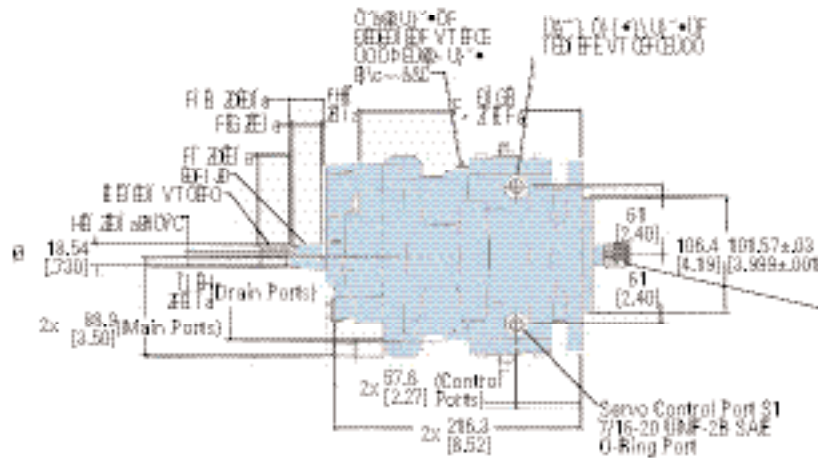


### Through Shaft

Same Side Porting



Main Port B  
1-5/16-12 UN-2B SAE  
O-Ring Port  
CCW rotation when  
port is pressurized at  
max. cam



TYPICAL PRODUCT NUMBER	MODEL CODE
72450-DAG-02	ACTA0B200B0B000B
72450-DAH-02	ACTA0A200B0B030B
72450-DAM-02	ACTA0B200F0B040B

SPECIFICATIONS	MODEL 72450	MODEL 742XX
Maximum Displacement	40 cm <sup>3</sup> /r [2.48 in <sup>3</sup> /r]	49 cm <sup>3</sup> /r [3.00 in <sup>3</sup> /r]
Minimum RPM Rated Speed	4500 RPM at minimum stroke angle	4500 RPM at minimum stroke angle
Maximum RPM Rated Speed	3600 RPM at maximum stroke angle	3600 RPM at maximum stroke angle
Continuous Rated Pressure	210 bar [3000 lbf/in <sup>2</sup> ]	172 bar [2500 lbf/in <sup>2</sup> ]
Maximum Rated Pressure	345 bar [5000 lbf/in <sup>2</sup> ]	310 bar [4500 lbf/in <sup>2</sup> ]
Maximum Intermittent Pressure	345 bar [5000 lbf/in <sup>2</sup> ]	310 bar [4500 lbf/in <sup>2</sup> ]

Performance:  
Max closed loop temp. 107° C (225°F)  
Max allowable case pressure 1.72 Bar (25 PSI)

**Note: All ports are SAE (J1926) o-ring ports. Dimensions are in millimeters [inches], unless otherwise specified.**

**Eaton**  
14615 Lone Oak Road  
Eden Prairie, MN 55344  
USA  
Tel: 952 937-9800  
Fax: 952 974-7722  
[www.hydraulics.eaton.com](http://www.hydraulics.eaton.com)

**Eaton**  
20 Rosamond Road  
Footscray  
Victoria 3011  
Australia  
Tel: (61) 3 9319 8222  
Fax: (61) 3 9318 5714

**Eaton**  
Dr.-Reckeweg-Str. 1  
D-76532 Baden-Baden  
Germany  
Tel: (49) 7221 682-0  
Fax: (49) 7221 682-788



**Hydraulics**

© 2005 Eaton Corporation  
All Rights Reserved  
Printed in USA  
Document No. E-MOPI-TM001-E2  
April 2006