

# FTU 080

Fluid transfer unit with ICM (Inline Contamination Monitor)



## Description

### Fluid Transfer Unit

FTU 080 Fluid Transfer unit suitable for filling, recirculation - via onboard 80L reservoir - and emptying of filtered hydraulic fluids and lubrication tanks.

The FTU can be utilised either as additional filtration to a system with a high incidence of contamination, or can be used as a standalone recirculating filtration circuit to clean fluid to a predetermined contamination level - monitored by the onboard ICM - prior to transfer of fluid to the system.

### > Features & Benefits

- Compact size
- Easy to use
- Easy maintenance
- Reliable
- Absolute filtration
- In Line Contamination Monitor

### Possible applications

- Low flow rate for filling of reservoirs
- Low-flow filtration for off-line tanks
- Pre filtration ability of fluid prior to filling of hydraulic system
- configuration with start / stop automatic motor cut-out from differential pressure indicator - electrical / visual
- configuration with start / stop phase inverter automatic motor cut-out from differential pressure indicator - electrical / visual
- In Line Contamination Monitor ICM



## Technical data

### Pump

Gear pump

### Electric Motor

0.75kW 1400rpm, 110/230V single phase

### Flow (l/min)

15 l/min

### Max. Operation Pressure

3.5 bar

### Inlet

Inlet (pump protection) filtration steel 250µm strainer

### Viscosity

150 cSt maximum fluid viscosity

### Suction Filter

250 µm metal mesh strainers

### By-Pass valve

Rating 3.5 bar with bypass

### Filtration

Water removal "spin-on" type, bypass set at 1.75 bar.

In-line filtration 3 µm absolute  $\beta$  1000 element bypass set at 3 bar.

### Filtration rating

See designation order for cartridge and filter elements

### Control

Electrical Control Box

### Indicator

Delivery line electric cut out switch

### Ambient Temperature

From -10 °C to 80 °C

### Working temperature

From 0 °C to 40 °C

### Protection Class

IP 55

### Seal

NBR

### Fluid Compatibility

Mineral oil compatible - please contact sales team for queries about other fluids

### Hoses

Flexible hoses - SAE100R4 fw 1" BSP swaged females 2mtr long hose

### Oil level

Sight glass and filler with integrated electric float cut out switch

### Weight

200 kg

### Mounting

Heavy duty trolley and wheels

 Standard

## Designation & Ordering code

FLUID TRANSFER UNIT FTU	
<b>Mobile filtration unit</b> <b>FTU</b> Fluid Transfer Unit	Configuration example: FTU 1 1 15 2 1 M250 SL4305
<b>Onboard reservoir</b> 1 80 litres	
<b>Inline contamination monitor</b> 1 With ICM	
<b>Flow rate</b> 15 15 l/min	
<b>Motor power</b> 2 0.75 kW, 1400 rpm	
<b>Voltage</b> 1 110V - 50Hz single phase 2 240V - 50Hz single phase	
<b>Inlet filtration</b> M250 250 µm suction strainer (internal of reservoir)	
<b>Outlet filtration</b> SL4305 Single spin on plus LMP length 5 (no elements included*)	

Filtration element is not included and should be ordered separately.

### Outlet filtration options:

**LMP:** CU400 5 A03, A06, A10, A16, A25 - **SPIN-ON:** CS150 A03, A06, A10, A25 - CS150 P10, P25 - **WATER REMOVAL:** CW150 P10, P25

### CARTRIDGE STANDARD LENGTH

Inorganic microfibre	Wire mesh element
CS 100 A01 A P01	CS 100 M25 A P01
CS 100 A03 A P01	CS 100 M60 A P01
CS 100 A06 A P01	
CS 100 A10 A P01	
CS 100 A25 A P01	

### CARTRIDGE EXTENDED LENGTH

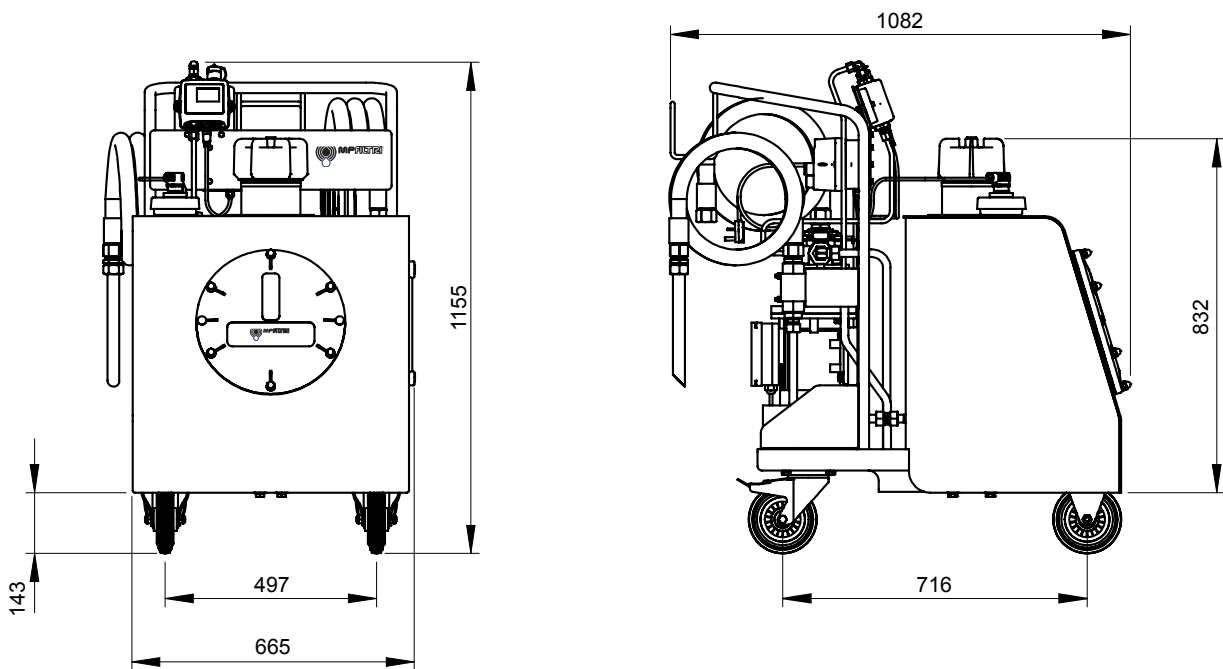
Inorganic microfibre	Wire mesh element
CS 150 A01 A P01	CS 150 M25 A P01
CS 150 A03 A P01	CS 150 M60 A P01
CS 150 A06 A P01	
CS 150 A10 A P01	
CS 150 A25 A P01	

### LMP LENGTH 5 ELEMENTS

Inorganic microfibre
CU 400 5 A03 A N P01
CU 400 5 A10 A N P01
CU 400 5 A16 A N P01
CU 400 5 A25 A N P01

### WATER REMOVAL - CARTRIDGE EXTENDED LENGTH

Multi-Layer water absorber
CW150P10A



### HYDRAULIC CIRCUIT

