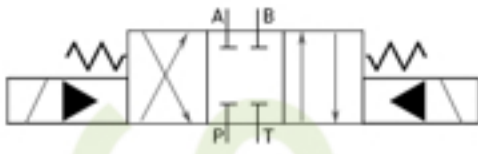


Valve Symbols - Page 3



4/3 Pilot operated directional control valve: solenoid operated, spring centered, internal pilot, internal drain, all ports closed in neutral...



... now showing: external pilot, external drain, A-B-T in neutral



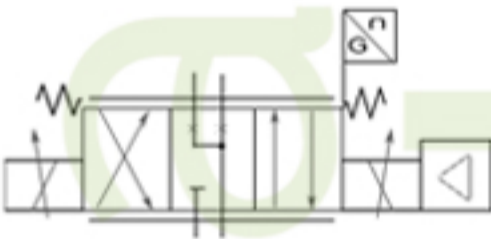
Alternative valve actuators: (1) pushing solenoid, (2) pulling solenoid, (3) dual solenoid, (4) lever, (5) pedal, (6) direct hydraulic operation, (7) direct pneumatic operation, (8) push, (9) pull, (10) push-pull, (11) turn, (12) manual override



Proportional directional control valve: direct operated, force controlled (non-feedback)..



... now showing: stroke controlled (with feedback)



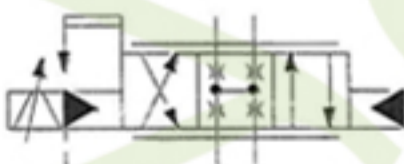
... now showing: integral amplifier (on board electronics)



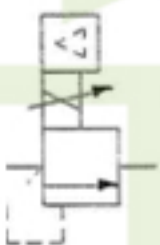
Proportional directional control valve: pilot operated, force controlled (non-feedback). Internal pilot, internal drain



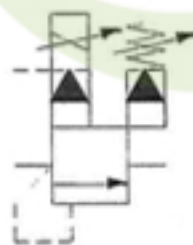
Servo valve: direct operated, electrical feedback, safety shut down position, integral amplifier



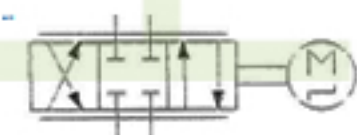
Servo valve: pilot operated, (2 stage), mechanical feedback, external pilot, internal drain



Proportional pressure relief valve: direct operated, integral amplifier



Proportional pressure relief valve: pilot operated, maximum pressure limitation, external drain



Proportional directional control valve: stepper motor actuated. All ports closed in neutral