

Valve Symbols - Page 1

hydraulicsonline.com | phone: +44 (0)845-644-3640



Check valve
(non-return valve)



Spring rating
important



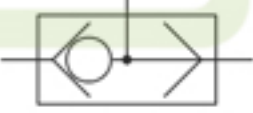
Adjustable flow control
valve



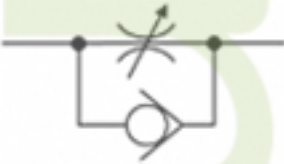
Pilot-to-open check valve
(3 port)



Pilot-to-open check valve
(4 port or "vented")



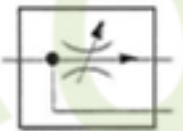
Shuttle valve



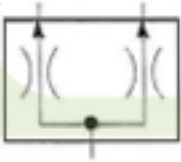
Throttle-check valve



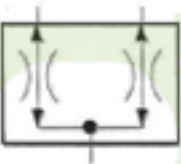
Pressure compensated
flow control valve



Priority flow control
valve (priority flow
divider)



Flow divider (spool type)



Flow divider / combiner
(spool type)



Pressure relief
valve: direct
operated,
internal drain...



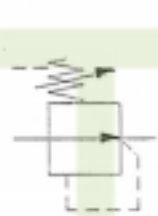
... now
showing:
pilot operated



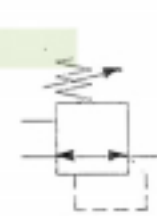
... now
showing:
external drain



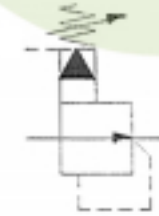
... now
showing:
external control
(unload or "vent")



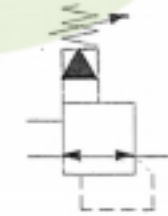
Pressure
reducing valve:
direct operated...



... now
showing:
3-way
function



Pressure
reducing valve:
pilot operated...



... now
showing:
3-way
function