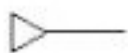


Other Basic Symbols



Pneumatic energy source
(gas energy)



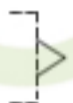
Hydraulic energy source
(liquid energy)



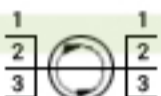
Permanent magnet



Port exhausting to
atmosphere



Exhaust to atmosphere



Three-way rotary connection
(3 way)



Spring



Adjustable spring



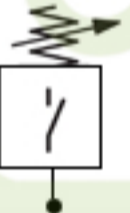
Pre-set stroke limiter



Adjustable stroke limiter



Lockable



Pressure switch



Pressure transducer
(analogue)



Electronic pressure
switch



Pressure
gauge



Temperature
gauge



Flow
meter



Top: isolation valve
(open for normal circuit)
Bottom: isolation valve
(closed for normal circuit
operation)



Filter



Air
Breather



Filler-
Breather



Dryer



Cooler



Heater