

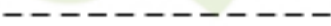
Lines & Basic Symbols



Working hydraulic line



Pilot line



Drain line



Direction of flow



Hose or other flexible working line



Lines crossing (no connection)



Lines connecting



Fixed throttle, lines with fixed restriction



Adjustable flow control valve (Throttle Valve)



Temperature compensated flow control valve



Vented reservoir



Pressurised reservoir



Connection to tank - above fluid level



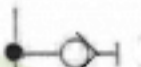
Connection to tank - below fluid level



Plugged port



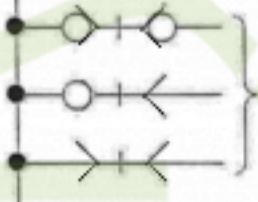
Connection to tank - below fluid level



Quick release coupling (closes when decoupled)



Quick release coupling (still open when decoupled)



Mated pairs of couplings



Orifice



Replaceable orifice



Plug in place of replaceable orifice