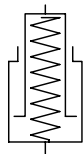


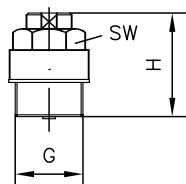
Function

HSE, HSA

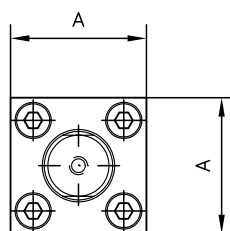
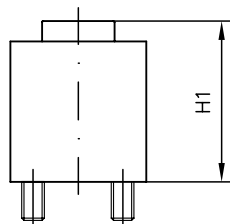


General parameters and dimensions

HSE ..
 Hydraulic screw-in clamps



HSA ..
 Manifold mounting hydraulic clamps



	Q_{max} [lpm]	Stroke [mm]	F_{max} [N]	Ports	Dimensions [mm]				m [kg]
					H	H1	SW = a/f	A	
			with 500 bar						
HSE 12	500	2 ... 8	5500	M 20 x 1.5	20.5 ... 32.5	-	SW 24	-	0.05 ... 0.08
HSE 16		3 ... 12	10000	M 24 x 1.5	26.5 ... 41.5	-	SW 24	-	0.08 ... 0.12
HSE 20		4 ... 20	15000	M 30 x 1.5	28.5 ... 56	-	SW 30	-	0.14 ... 0.3
HSE 24		5 ... 20	23000	M 36 x 1.5	34 ... 65	-	SW 36	-	0.25 ... 0.5
HSA 32		20	40000	-	-	71	-	60	1.6
HSA 40	25	60000	-	-	85	-	70	2.5	

Associated technical data sheets:

- Hydraulic clamps type HSE and HSA: **D 4711**

See also section "Devices for special applications":

- Hydraulics for clamping